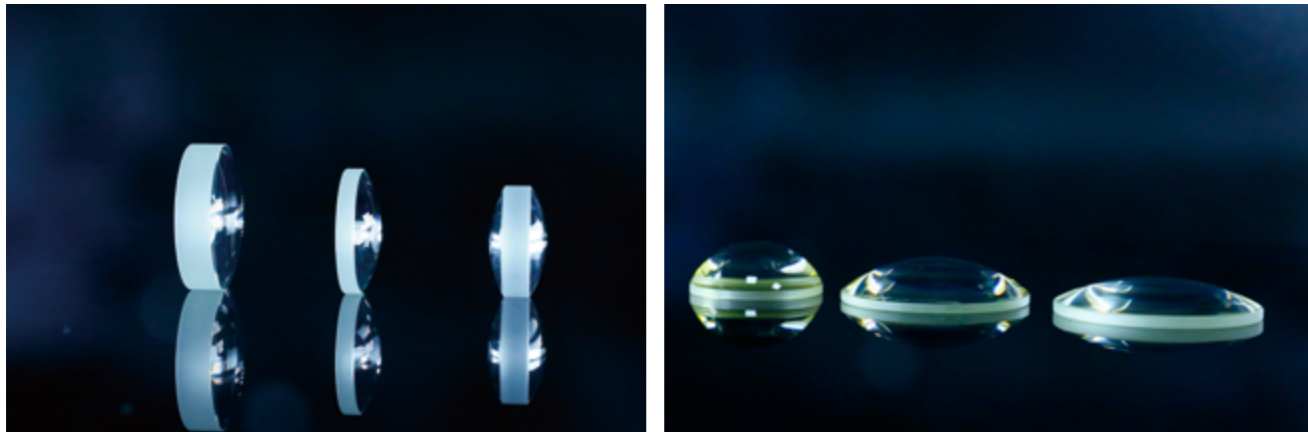
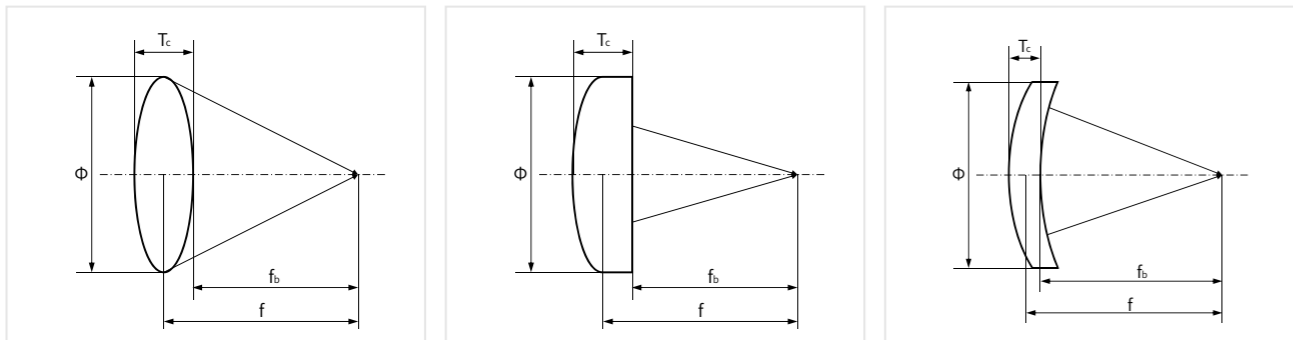


LENSES 透镜

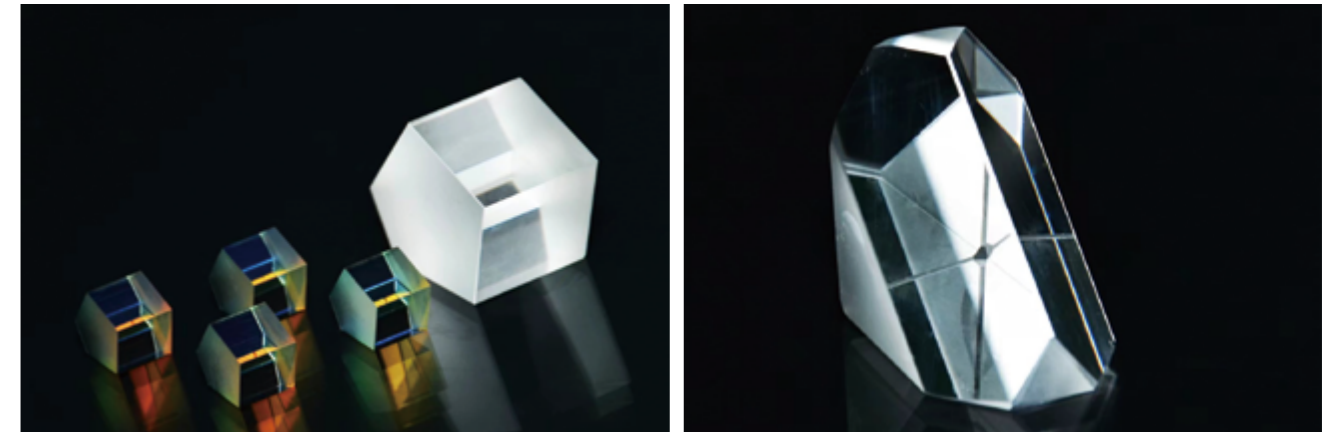


瑞烁光电可提供: SFS、K9、石英、氟化钙等材质, 直径 \varnothing 3-200, 焦距: \pm 5mm ~ \pm 1000mm 的平凹透镜、平凸透镜、弯月透镜、双凸透镜、双凹透镜。可根据使用波长提供相应镀膜。

RAYSER can provide materials such as SFS, K9, quartz, CaF2 etc., with a diameter of 3mm-200mm and a focal length of \pm 5mm to \pm 1000mm for Plano-Concave Lenses, Plano-Convex Lenses, Bi-Convex Lenses, Bi-Concave Lenses, and Negative Meniscus Lenses. Meniscus Lenses Corresponding coating can be provided based on the wavelength used



PRISM 棱镜



棱镜用 K9, JGS1 等光学材料做成的多面体光学器件, 在光学仪器中用来把复合光分解成光谱或用来改变光线的方向, 常用于光谱仪、望远镜、测量仪器、医疗仪器。瑞烁可以提供的棱镜类型有: 直角棱镜, 屋脊棱镜, 道威棱镜以及五角棱镜等

The prism is a polyhedral optical device made of K9, JGS1 and other optical materials. It is used in optical instrument to decompose composite light into spectrum or change the direction of light. It is commonly used in spectrometers, telescopes, measuring instruments and medical instruments. The types of prisms that RAYSER can provide include: right angle prisms, Amici prisms, Dove prisms, and penta prisms, etc.

