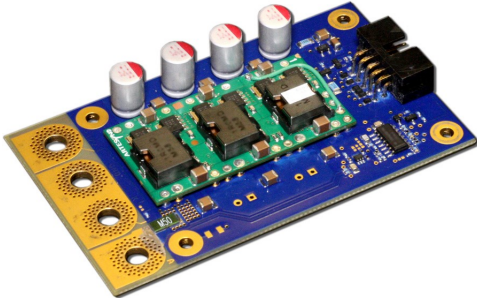




Analog Modules, Inc.

Specialists in Analog and Laser Electronics

Model 787 Stackable CW & Pulsed Laser Diode Driver



AMI's **Model 787** OEM Laser Diode Driver is a highly efficient, current regulated, low ripple tri-phase laser diode driver designed to power pulsed and CW high current laser diode stacks. Proprietary technology allows AMI to offer a 50 A, 5 V driver with industry leading efficiency and footprint.

- OUTPUT CURRENT - up to 50 A PER UNIT
- STACK MULTIPLE UNITS FOR 200 A or HIGHER
- COMPLIANCE VOLTAGE - up to 5.0 V
- EXTREMELY COMPACT & EFFICIENT
- +5 VDC INPUT POWER
- HIGH EFFICIENCY up to 96%

Model 785A Ultra Low Ripple CW & Pulsed Laser Diode Driver

AMI's **Model 785A** OEM Laser Diode Driver is ideal for compact industrial and medical direct illumination applications that require extremely low ripple and/or pulse shaping. Proprietary technology allows AMI to offer a 0-20 A, 1.5-26 V driver with industry leading output current stability. Contact AMI today to discuss your application's requirements.



- OUTPUT CURRENT - up to 20 A
- PULSE WIDTH OF $\leq 10 \mu\text{s}$ to CW
- COMPLIANCE VOLTAGE - up to 26 V
- EXTREMELY LOW OUTPUT RIPPLE
- ANALOG PULSE SHAPING
- 130 W MAXIMUM AVERAGE POWER

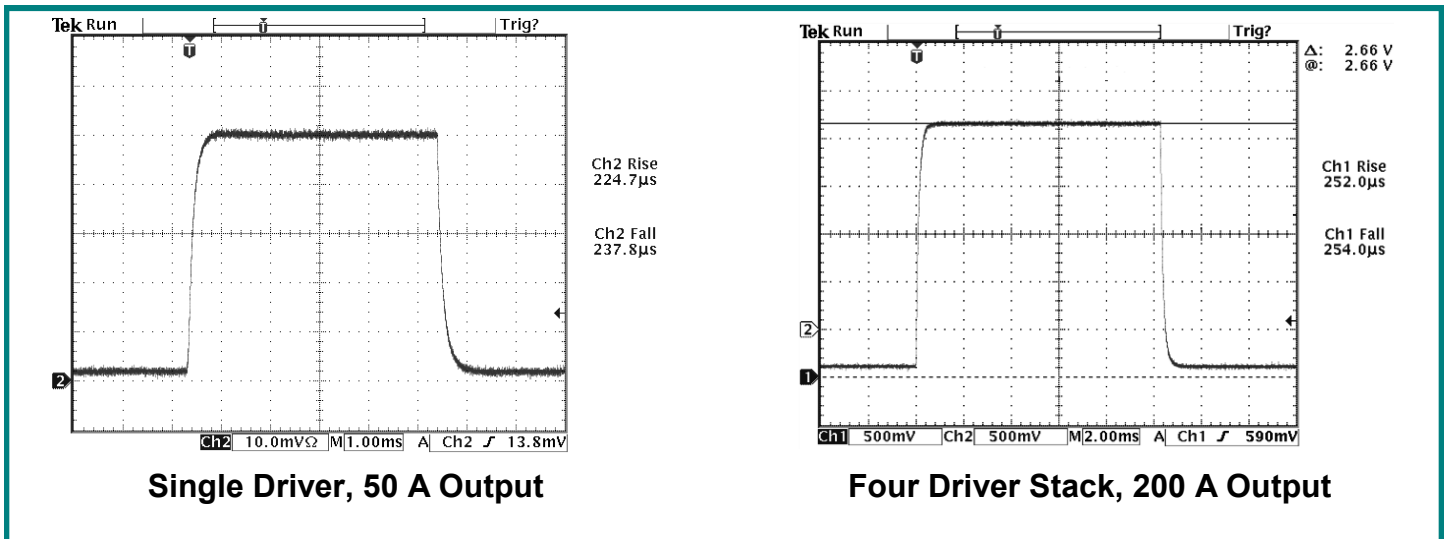
Model 788 CW & Pulsed Laser Diode Driver



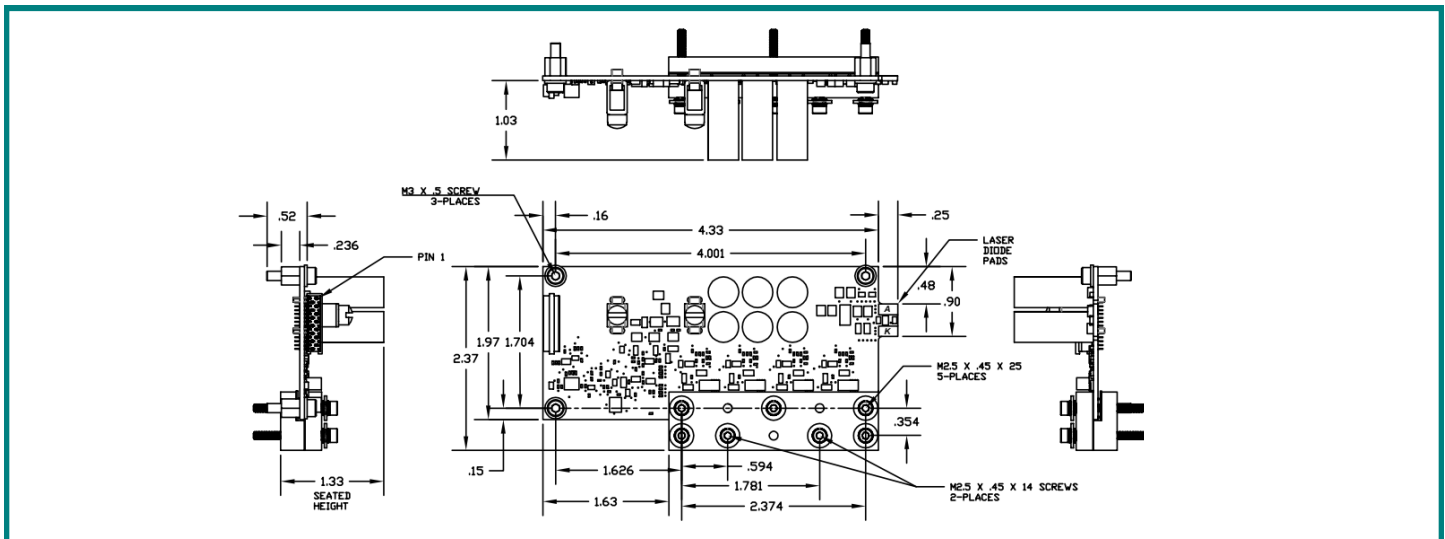
AMI's **Model 788** Dual Channel Compact OEM CW and Pulsed Laser Diode Driver incorporates a boost converter, capacitor bank, and a current regulated buck converter to provide a smooth, programmable current to a laser emitter diode load. Exceptionally high efficiency makes cooling requirements minimal. The output current is up to 18 A per channel or 36 A paralleled. Current rise and fall times are $< 5 \mu\text{s}$ with low ripple. Load compliance is 0 to 75 Volts.

- OUTPUT CURRENT - UP TO 36 A
- OUTPUT PULSE WIDTH - $\leq 10 \mu\text{s}$ TO CW
- COMPLIANCE VOLTAGE - UP TO 75 V
- EXCEPTIONALLY HIGH EFFICIENCY $> 95\%$
- ANALOG PULSE SHAPING
- RoHS COMPLIANT

Model 787 Stackable CW & Pulsed Laser Diode Driver



Model 785A Ultra Low Ripple CW & Pulsed Laser Diode Driver



Model 788 CW & Pulsed Laser Diode Driver

PARAMETER	Min.	Model 788 Typical	Max.	Units
INPUT				
Power	+47	+48	+49	VDC
Current	-	-	TBD	mA
Current Control (Scaling = 12 A/V)	0	-	2.5	V
OUTPUT				
Current	1	-	36	A
Compliance Voltage	1.5	-	75	V
Pulse width	10	-	CW	μs
Duty Cycle (240 W Average Power Limit)	0	-	100	%
Modulation Bandwidth (30 A Output)	20	-	-	kHz
Modulation Bandwidth (5 A Output)	100	-	-	kHz
Risetime at 30 A (10% to 90%)	-	-	5.0	μs
Ripple (30 A Output)	-	-	1	A _{RMS}
Ripple (5 A Output)	-	-	0.2	A _{RMS}
Pulse Overshoot at 30 A	-	-	10	%