

高稳定性调Q 固体激光器

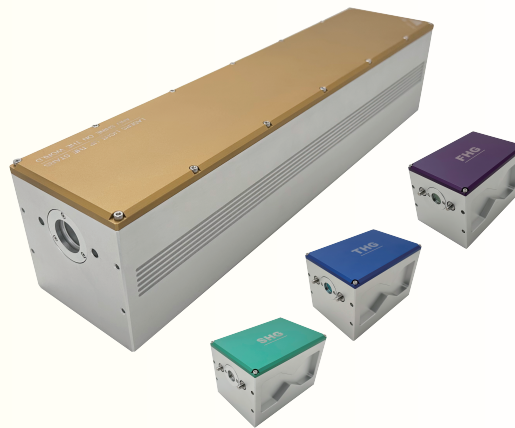
High stability Q-switched solid-state laser



特点 Characteristic

能量输出稳定性、一致性好RMS < 1%，性能稳定、寿命长，应用于LIBS及定量分析，多种波长可供选择

Stable and consistent energy output with RMS<1%, stable performance and long lifespan, suitable for LIBS and quantitative analysis, with multiple wavelengths available for selection



优势 Superiority

- 高稳定性RMS < 1%
- 窄脉宽、高峰值功率
- 可靠性高，寿命长
- 多种波长可供选择

High stability RMS < 1%

Narrow pulse width, high peak power

High reliability and long lifespan

Multiple wavelengths available for selection

参数 Data sheet

| 技术指标 Technical Indicators | 1064nm | 532nm | 355nm | 266nm |
|---|--|-------|-------|-------|
| 单脉冲能量/Single pulse energy (mJ) | 150 | 70 | 35 | 15 |
| 能量稳定性/Energy stability RMS (%) | 1% | 1.5% | 2% | 3% |
| 波长/wavelength (nm) | 1064/532/355/266nm | | | |
| 脉冲宽度/Pulse width (ns) | < 10 | | | |
| 重复频率/Repetition frequency (Hz) | 1-20Hz | | | |
| 发散角/Divergence angle (mrad) | ≤5 | | | |
| 光束质量/Beam quality M ² | ≤1.5 | | | |
| 光斑直径/Spot diameter | ≈6 | | | |
| 输入功率/Input power (W) | 500 | | | |
| 制冷量/Refrigeration capacity (W) | < 200W | | | |
| 工作环境温度/Working environment temperature (°C) | 10-35 C | | | |
| 工作环境湿度/Working environment humidity (%) | < 60% | | | |
| 激光器冷却介质/Laser cooling medium | Deionized water, distilled water, purified water | | | |